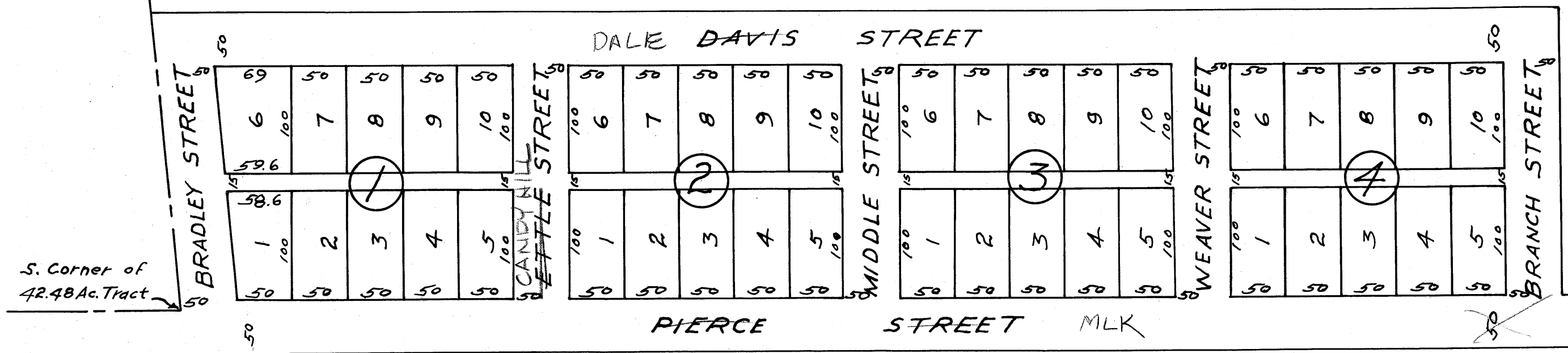


**CANDY HILL ADDITION**  
 Off of the S.E. side of a 42.48 acre tract  
 conveyed by M.F. Dansby to W.C. Davis et al  
 D.R. 68 Pg. 521 10-2-26  
 Scale: 1" = 100'



See Sewer Addition - 40

~~ALLEN ACADEMY TRACT~~

on bus lines  
2/16/11 wd